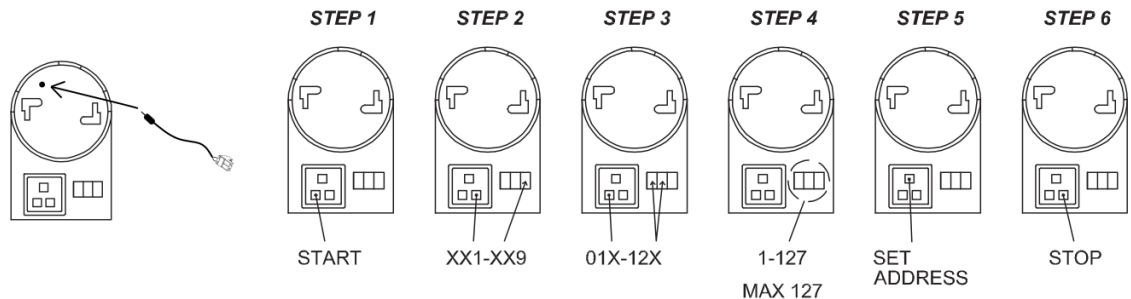


N-IO Tech Note

N-IO is an input and output unit, for example, for phase monitoring. The unit has 4 inputs and 2 outputs. A maximum number of 16 units may be connected to a central. The unit reserves an address on the address line. The address may be set and checked with the Neptolux programming device and the N-PROG Cable. Connect the programming cable to the LINE port.



N-IO inputs

- Can be used for phase monitoring or fault monitoring.
- The input may monitor opening or closing contacts.

N-IO outputs

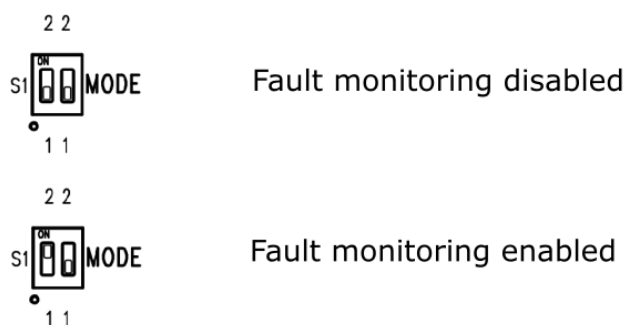
- May be used to control eg. traditional luminaries which may be activated by a programmable function
- The state of the output is indicated with a green LED (OUT1/OUT2). When the output is activated, the led is illuminated

STAT LED

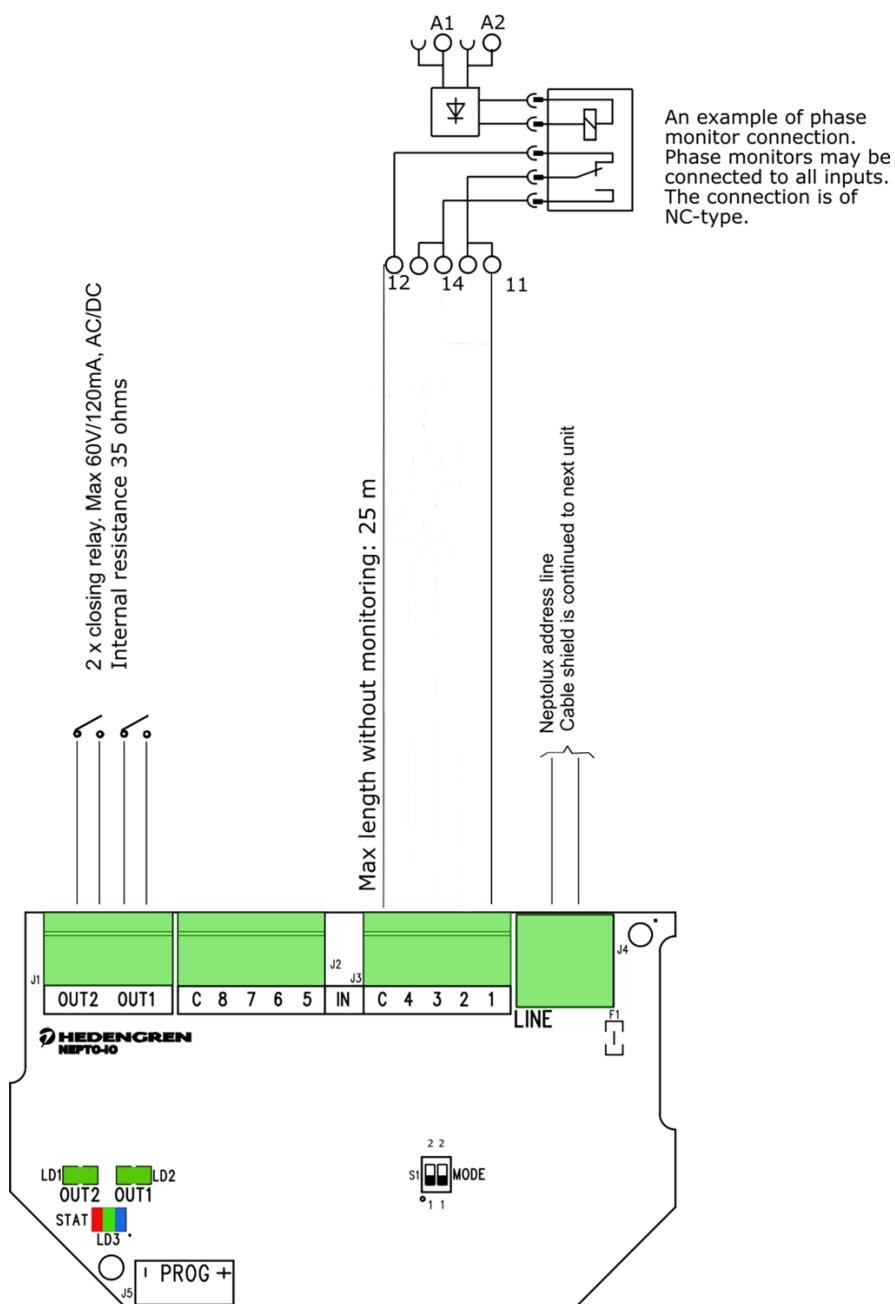
- The LED is blue until initialization is completed
- The LED flashes green during polling if fault monitoring is disabled and if the input is monitored and OK.
- The LED flashes red during polling if fault monitoring is activated and if the input is in fault mode.

FAULT MONITORING

Inputs may be monitored for short circuits and open circuits. Monitoring can be activated with the MODE switches on the printed circuit board. Fault monitoring is activated by switching the left side slide lever of the MODE switch to position 2. The right side switch has no function. The fault monitoring resistors supplied with the product must be connected according to the image on the next page if fault monitoring will be enabled.



PLC-RSP-230UC/21



Unit	N-IO
Operating voltage [VDC]	25 – 40
Current consumption from line [NU]	2 / 0.1W
Current consumption from line [mA]	3,2
Dimensions (housing) (width x length x height) [mm]	120 x 66 x 32,5
IP class	20
Monitoring resistors	8 pcs / 10 kilo-ohms